

The Champ des Possibles

Founded in 2010, the Amis du Champ des Possibles is a not-for-profit organization dedicated to preserving the Champ and its biodiversity. This space is co-managed by Les Amis du Champ des Possibles and the Plateau-Mont-Royal borough.

We, the Amis du Champ des Possibles, recognize the Kanien'kehà:ka Nation as custodians of the lands and waters through which we pass, where we stroll, rest, play, explore, celebrate and gather. Historically, Tiohtià:ke/Montreal was known as a gathering place for many First Nations, and today a diversity of Indigenous peoples, as well as others, reside here. We respect links with the past, present and future, and recognize continuing relationships between Indigenous Peoples and others in the Montreal community.

Did you know that over 423 species have been observed in the Champ, including:

217 plants, 143 insects, 35 birds, 11 mammals and 17 other species.

Biodiversité urbaine, catalogue des espèces du Champ des Possibles 2017.

Many thanks to the board of directors of Les Amis du Champ des Possibles and the sign committee. Graphic design + illustrations: Raphaëlle Aubin

Legend

- Champ des Possibles
- Walkway with universal accessibility
- Bike path
- Main paths



The Champ des Possibles is a fragile ecosystem, teeming with life. Together, let's steward this special green space.

The Champ des Possibles is an oasis, reconnecting us with urban nature. But the preservation of its wildness and rich biodiversity is continually put to the test. Over the years, the site has faced many challenges.

The Amis du Champ des Possibles (ACDP) is counting on the active collaboration of people who use the Champ to ensure the care and preservation of the site. We call on your eco-citizenship for better cohabitation with nature in the city.

Would you like to organize an activity in the Champ des Possibles?

The Champ des Possibles is available for a wide range of short-term activities, including cultural and artistic events.

E-mail Les Amis du Champ des Possibles at contact@champdespossibles.org so that we can get to know you better and support your project.



LES AMIS DU CHAMP DES POSSIBLES

Soutenu par

Le Plateau-Mont-Royal
Montréal

Founded in 2010, Les Amis du Champ des Possibles is a non-profit organization dedicated to the conservation and biodiversity of the Champ. This space is co-managed by Les Amis du Champ des Possibles and the borough.

champdespossibles.org

contact@champdespossibles.org



Many thanks to the board of directors of Les Amis du Champ des Possibles and the sign committee. Graphic design + illustrations: Raphaëlle Aubin

Best practices for cohabiting with urban nature

The Champ is subject to the same rules as other city parks and green spaces.



The Champ is an ecosystem—a home for non-human species. Let's keep our activities temporary and without trace, so that we can all benefit from this tranquil and natural space.



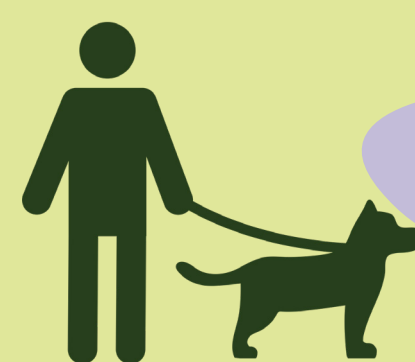
Protect the Champ's lush, rare and fragile species by not lighting campfires.



Keep the Champ's animals wild. Do not feed the animals.



Walk your bikes to better admire the wild nature and keep pedestrians safe on paths.



Dogs must be leashed.



The Champ's paths are for pedestrians. Vehicles are prohibited.



Avoid trampling on vegetation by sticking to the trails.



Waste belongs in the trash, compost or recycling containers.



Are you unhoused or at risk of losing your home?

For those in need of support and guidance, contact **Plein Milieu** at 4597 St-Denis, Monday to Friday, 10 a.m. to 5 p.m., or call 514-659-5658.

Plein Milieu is a community organization in Plateau-Mont-Royal. Plein Milieu builds trusting relationships with substance users, people who are unhoused or at risk of homelessness, as well as with young people aged 12 and over, with a view to reduce harm and provide information and prevention.

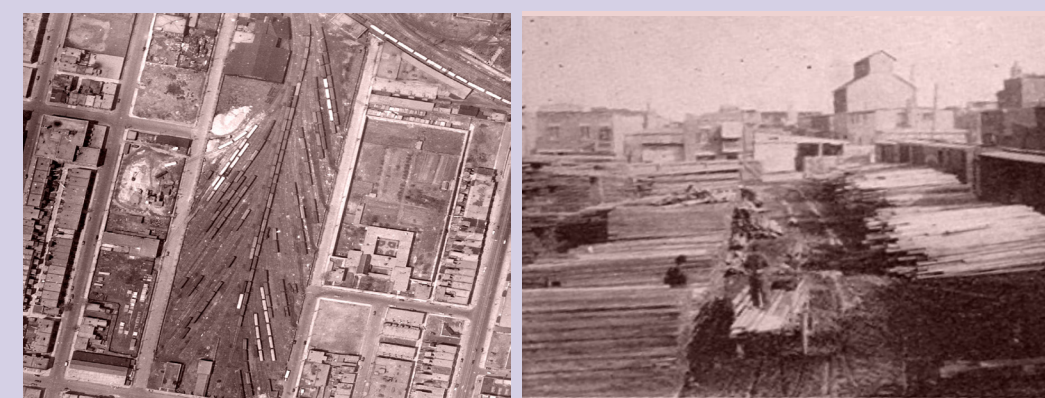
Champ des Possibles and its history

Did you know that this special greenspace was once a landfill site and then a railyard?



First Nations

The Kanien'kehà:ka (Mohawk) people have a long-standing, but not exclusive, relationship with the island of Montreal. Little is known of the Champ's use before the early 19th century. Since it is far from the river, with shallow soil and no source of water, the site offers few resources that would have attracted people, except as a place of passage.



1906-1970: Railyard. Credit: Mile End Memories and City of Montreal archives

1906 to the 1970s

Canadian Pacific acquires the land and builds a railyard. Railway lines serving the district's businesses cover almost the entire area between Henri-Julien and de Gaspé avenues, as far as Maguire Street. Numerous companies are established in the area: industrial bakeries and butchers, lumber, coal and scrap yards, warehouses and factories. Over the years, various types of waste, including coal, fuel oil, petroleum products, metals and slaughterhouse debris accumulate on the site, contaminating it considerably.

Many thanks to the board of directors of Les Amis du Champ des Possibles and the sign committee. Graphic design + illustrations: Raphaëlle Aubin. Drawing: Anne-Marie Cousineau - Historical information: Justin Bur (Mile End Memories)

First half of the 19th century

Part of the site is used as a quarry. Toward the end of the 19th century, the quarry hole is backfilled with waste.

Early 1980s

The rail lines are removed and the land left untouched. As natural revegetation gradually takes place, the community, scientists and artists become interested in the site.

1960s

Most of the neighbouring companies move to the new suburbs and the site is gradually abandoned.



2007-2011: Roerich Garden. Credit: Emily Rose Michaud

2007 to 2011

Artist Emily Rose Michaud creates a land art installation, Roerich Garden, to promote the conservation of this under-appreciated oasis. Her collective art project is inspired by the symbol of the Roerich Pact, used during the Second World War to signal pilots about to drop their bombs that their targets were of great cultural importance.



2010

2010: Photo in ACDP files (with Roger Latour)

Founding of Les Amis du Champ des Possibles, a not-for-profit organization. Working with the community, the organization develops a vision for the Champ des Possibles and helps visitors discover its priceless biodiversity.

2015 to now

Public consultations are organized by the Mile End citizens' committee. They confirm a consensus on the importance of encouraging biodiversity and allowing Montrealers to enjoy and co-manage the space. Led by the Amis du Champ des Possibles, a collective reflection begins on the restoration of Champ des Possibles after it is decontaminated.

2013

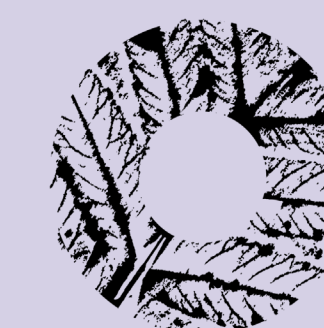
The Champ is rezoned from industrial to natural space. The first co-management agreement for the site is signed by the Plateau-Mont-Royal borough and the Amis du Champ des Possibles.

2009

The City unveils its plan to revitalize the Saint-Viateur Est sector, including the purchase of the Canadian Pacific lands (2009) for a public works yard. Saint-Viateur Street is to be extended across the Champ, from de Gaspé Avenue to Henri-Julien Avenue.

This project is not accepted by the local community, who mobilize to save the Champ des Possibles as a space rich in biodiversity, to reconnect with nature in the city.

In addition, the Conseil du patrimoine de Montréal comes out in opposition to this redevelopment project, citing the need to respect measures established to preserve the nearby Carmelite monastery.



LES AMIS DU CHAMP DES POSSIBLES

champdespossibles.org



Soutenu par

Le Plateau-Mont-Royal
Montréal

Decontaminating the Champ des Possibles

Why?

The industrial past of the Champ des Possibles has left its mark. Since the closure of the railyard, several studies have revealed that hydrocarbons and heavy metals such as arsenic, tin, zinc and lead are present in the soil. These contaminants are harmful to the surrounding ecosystem. In accordance with the Environment Quality Act [Section 22(9)], the City plans to decontaminate and rehabilitate the site. This decontamination process is managed by the municipal environment department, under the supervision of Quebec's Ministry of the environment and the fight against climate change fauna and parks.

How?

The decontamination approach will have to comply with methods approved by the Ministry. Soil contaminated to levels exceeding those permissible (according to Schedule II of the Land Protection and Rehabilitation Regulation and Schedule I of the Regulation respecting the burial of contaminated soils) will be excavated, then separated by type and level of contamination for safe disposal at a site authorized by the Ministry. The Plateau-Mont-Royal borough will do its utmost to minimize the impacts of remediation on the Champ.

Soil decontamination methods complying with current regulations include injecting reagents directly into the soil to oxidize contaminants, capping soils, excavating contaminated soil and either treating it, or disposing it in an appropriate location when treatment is not possible. Alongside these methods, research in the field continues to innovate, notably regarding the breaking down of contaminants by plants or fungi. Whatever approach is chosen, ACDP hopes that the intervention used will be the least damaging to the site's biodiversity.

Where?

The Plateau-Mont-Royal borough will do everything in its power to protect and conserve mature trees, and will take steps to preserve all areas not affected by the work. A map of the areas concerned will be posted as soon as the process has advanced.

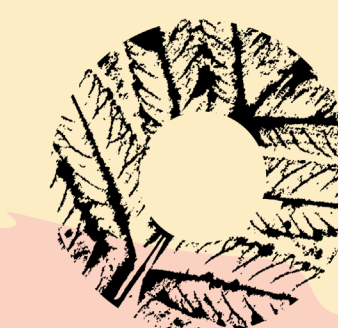
And afterwards?

Existing plants and trees will be preserved as far as possible. Full rehabilitation of the biodiversity of the areas affected by the work is planned. Activities will be organized to revegetate these areas with seeds collected prior to decontamination work. Other local species may also be planted.

Coming soon

Ground decontamination is planned for the Champ des Possibles. Affected zones will be closed to the public for the duration of the decontamination work. Details about the decontamination project and schedule will be posted as they are finalized.

Many thanks to the board of directors of Les Amis du Champ des Possibles and the sign committee. Graphic design + illustrations: Raphaëlle Aubin



LES AMIS DU CHAMP DES
POSSIBLES
champdespossibles.org



Soutenu par

Le Plateau-Mont-Royal
Montréal